

DISTANCE FREQUENCIES: TRANSMISSION

JULY 2021

Written by
**Randy Baker, Kylos Brannon, Jenny McConnell Frederick, Roc Lee,
Tosin Olufolabi, Douglas Robinson, Debra Kim Sivigny, Jonelle Walker**

Directed by
Jenny McConnell Frederick

July 15-31, 2021
The Parks at Walter Reed

DISTANCE FREQUENCIES: TRANSMISSION

A *PSYCHOGEOGRAPHIES* PROJECT

**By Randy Baker, Kylos Brannon*, Jenny McConnell
Frederick, Roc Lee, Tosin Olufolabi, Douglas Robinson,
Debra Kim Sivigny*, and Jonelle Walker***

**Directed by
Jenny McConnell Frederick**

Set and Props Design
Mel Bieler

Sound Design
Gordon Nimmo-Smith*

Costume Design
Moyenda Kulemeka

Lighting Design
James Morrison

Video Design
Kylos Brannon*

Stage Manager
Allison Poms-Strickland

Cast (in Order of Appearance):

XAVIER: Frank Britton* +

ERNIE: Ricardo Blagrove

JUDAH: Erik Harrison

BEATRICE: Jessica Ludd

JJ: James Finley

ANGELINA: Tara Whitney

GERALDINE: Lorrie Smith Saito

Assistant Stage Manager: Abby Wasserman

Technical Director: Devin Mahoney

Master Electrician: Elliott Shugoll

Visual Design Consultant / Model Box

Creation (in the trees): Debra Kim Sivigny*

Voice of Reginald Fessenden: Scott McCormick*

Sound Engineer: James LaDow

Lighting Engineer: Kat Darnell

Box Office Manager: Michael Kyrioglou

House Manager: Kelsey Jenkins

* Resident Company Member

+ Member, Actors Equity Association

**Rorschach Theatre's 2020/2021 Season is sponsored in part
by generous contributions from:**

Lou & Bonnie Cohen, Jeffrey Cunard, The DC Commission on the Arts
and Humanities, The Eugene M. Lang Foundation, Pete Miller & Sara Cormeny,
The Morgan Fund, The Nora Roberts Foundation, and The Share Fund.

Rorschach

THEATRE *we are what you see.™*

Jenny McConnell Frederick and Randy Baker
Artistic Directors

Through uncommon uses of environment and intimate passionate performances, Rorschach Theatre seeks to lure its audiences beyond the limits of ordinary theatrical experience so that they may discover new elements of their own humanity.

Rorschach Theatre tells stories that allow for innovative design and visceral performances. The company treats productions as "installations" that surround the audience with the world of a play. The work centers on the intersection of magic or impossible moments and every day human experiences. Without proselytizing, it provides a complex, intellectual catalyst for self-exploration of challenging subjects.

In addition to its regular season, Rorschach produces "Magic in Rough Spaces," an annual new play development series; "Klecksography," an annual new artist development event (for actors, local playwrights, and directors); and "Fight Camp," a stage combat training program held every summer. The company also organizes "Other People's Ink," a monthly offering of non-theatre social events that speak to the company's aesthetic.

rorschachtheatre.com * facebook.com/rorschachtheatre * [@rorschachdc](https://twitter.com/rorschachdc)



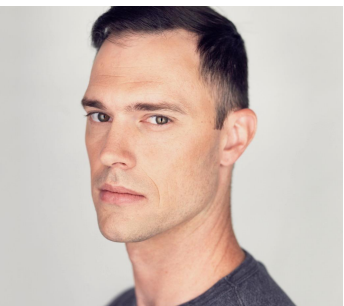
ABOUT THE CAST



RICARDO BLAGROVE (Ernie): Monumental Theatre: *Head Over Heels*; World Stage Theatre: *Amazing Grace - The Musical*; Roxy Regional Theatre: *A Raisin in the Sun*; StillPointe Theatre: *Pop: Who Shot Andy Warhol?*; Toby's Dinner Theater: *Dreamgirls*; Baltimore Center Stage: *Les Liaisons Dangereuses*; Everyman Theatre: *Ruined*; ArtsCentric: *Little Shop of Horrors*, *Smokey Joe's Cafe*, *Memphis*, *Dreamgirls*, *Jesus Christ Superstar*, *Into The Woods*; Annex Theater: *Double Consciousness*; Carl J. Murphy Fine Arts: *The Door*, *Pantomime*, *Treemonisha*, *Porgy and Bess*; Carnegie Hall: *Jeanne d' Arc au Bûcher*, *Bernstein Mass*, *Faure Requiem*.



FRANK BRITTON (Xavier) is a DC native and longtime Rorschach Company member who has been a part of the DC theatre scene professionally for the past 19 years. He is also an instructor and graduate of the National Conservatory of Dramatic Arts, and has appeared in productions with many area theatres including Arena Stage, Imagination Stage, Round House Theatre, Studio Theatre, Washington Stage Guild, Avant Bard Theatre (Acting Company Member), 1st Stage, Theater Alliance, SCENA Theatre, and has appeared regionally around the country with theatres, including Cincinnati Playhouse in the Park, Milwaukee Repertory Theater, and off-off-Broadway at La MaMa ETC (NYC). In 2018, he earned the Helen Hayes Award (The Robert Prosky Award for Outstanding Lead Actor in a Play—Helen Production) for his performance in *Jesus Hopped The 'A' Train* with 1st Stage. Many, many thanks to Randy, Jenny, and the Cast and Crew.

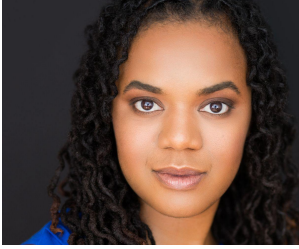


JAMES FINLEY (JJ) is an actor and fight choreographer who has been working in the DC area for over 15 years. He and his work have been seen on numerous area stages, including with NextStop, Keegan, Rorschach, Flying V, AvantBard, and Constellation Theatres. He is also the Co-Communications Director with Live Action Theatre, an Advanced Actor-Combatant with the Society of American Fight Directors, a member of the International Order of the Sword and the Pen, and working towards certification as an Intimacy Director with IDC.



ERIK HARRISON (Judah) (he/him/his) is an actor and writer. His stage acting credits include *Suddenly Last Summer*, *A Misanthrope* (Avant Bard), *ENRON* (4615 Theatre Company), *Dead Dog's Bone*, *Bright Room Called Day* (Nu Sass Productions), *Sing To Me Now* (Rorschach Theatre), *Adult Entertainment* (The Klunch), *'Tis Pity She's a Whore*, *A King and No King* (Brave Spirits Theatre), *King Kirby*, *Completely Hollywood (Abridged)* (Off The Quill). He is a company member at Nu Sass Productions, a frequent drunken buffoon with Shakespeare in the Pub, co-founder of The Coil Project, and a writer/voice actor for The Coil Project Variety Hour, broadcasting biweekly radio serials on WOWD 94.3 FM.

ABOUT THE CAST (CONTINUED)



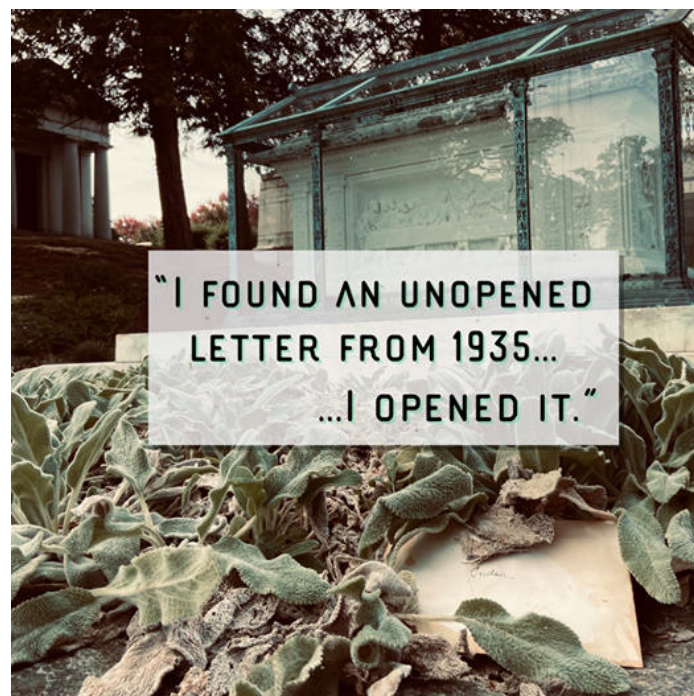
JESSICA LUDD (Beatrice) is a Washington, DC-based actor originally from Philadelphia. She is currently training in the two-year conservatory program at the Maggie Flanigan Studio, through the miracle of Zoom. Jessica is thrilled and honored to make her live DC stage debut with *Rorschach* as part of this production!



LORRIE SMITH SAITO (Geraldine) is excited to be joining *Rorschach* on this amazing journey through space and time! A graduate of the Honors Acting Conservatory at the Theatre Lab, she has appeared in *A Fierce Longing* at Baltimore Theatre Project, *Inheritors: the Nature of Keys* at HCC Studio Theater, *Lakeboat* at the Atlas Performing Arts Center, *Amputating Shakespeare* at the Mitchell Theater, *Long Island Sound* with Rainbow Theatre Project, *Man on the Street* at the Kennedy Center, and the short film *The Rise of Kenji Gojira*, and wrote/directed the award-winning short film *The Hitman Extraordinaire*.



TARA WHITNEY (Angelina) is a multi-hyphenated artist based in Baltimore, MD. Tara holds a BA & MFA in Acting and has been working professionally post-graduate studies. In addition to acting, Tara works as an Instructor @ American University, is an mbg Certified Functional Nutrition Coach & serves as an independent consultant and District Manager with Arbonne International running an online holistic wellness business (tarawhitneyrison.arbonne.com). She is thrilled to join *Rorschach* in her first LIVE performance since the Pandemic. Tara is excited for all of the abundance happening in her life and looks forward to her next levels personally and professionally. Follow @twhitneyrise to connect & keep up w/ Tara Whitney."



ABOUT THE CREATORS

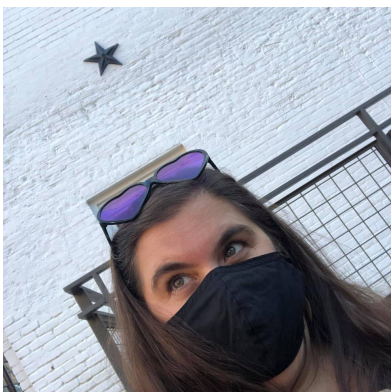
*The entire DISTANCE FREQUENCIES experience
(Chapters 1-7 and the live show)
was written and created by a team of eight artists:*



RANDY BAKER is a playwright, director and the co-Artistic Director of Rorschach Theatre in Washington DC. Recent shows he has directed with Rorschach include *Very Still and Hard to See* (Five Helen Nominations including Best Director), *The Electric Baby*, *She Kills Monsters*, *The Minotaur* and *After the Quake*. Recent shows he has directed outside of Rorschach include the seven-room living installation piece, *Hello, My Name Is...* at The Welders (Three Helen Hayes nominations including Best Director), a shadow puppet gamelan-inspired *A Midsummer Night's Dream* at WSC Avant Bard, *Big Love* at Catholic University, *Anon/ymous* at Georgetown University and his own adaptation of *Rashōmon* at American University. Recent plays he has written include the world premieres of *Forgotten Kingdoms* and *Truth & Beauty Bombs: A Softer World* at Rorschach Theatre and workshops and educational productions of *The Burning Road* (Arena Stage), *Monastery* (Theater J), and *Rashōmon* (American University and Spooky Action Theatre). Upcoming is *The Legend of Hang Tuah* at Pointless Theatre (an adaptation of the Malay Legend with shadow puppets and martial arts).



KYLE "KYLOS" BRANNON is an Assistant Professor at American University and Associate Division Director for Film & Media Arts. He performs as a VJ, crafting live video mash-ups for DJs at 930 Club, U Street Music Hall, The Black Cat, and other venues. He designed video projections for Rorschach's productions of *410[gone]*, *Reykjavik*, *Annie Jump & the Library of Heaven*, *She Kills Monster*, and *Toxic Avenger*. Installations and video performances include immersive experiences for Little Salon DC, and a solo exhibit, *Forgetting is Normal* (Anacostia Arts Center). He co-directed the doc *An Impression: Dischord Records*, and was co-producer on web series *Stage Fright* (AU/NBC4.)



JENNY MCCONNELL FREDERICK is the co-Artistic Director of Rorschach Theatre. She is a DC-based director, producer and theatre maker with a strong belief in impossible theatre. For Rorschach, she has directed the Helen Hayes Nominated *Voices Underwater* and *God of Vengeance* as well as Neil Gaiman's *Neverwhere* and its remount, *Dead City*, *This Storm is What We Call Progress*, *Rough Magic*, *The Arabian Night*, *The Scarlet Letter*, *Master and Margarita*, *A Clearing in the Woods*, and *The Illusion*. In 2015, she conceived of and directed *Truth & Beauty Bombs*, an original work based on the Canadian web comic "A Softer World." She has also directed for Theater J (*G-d's Honest Truth*) and Catholic University (*Sissy and Fifi & Hunter Forever!*). During her tenure as Director of Artistic Programs at CulturalDC, she served as Artistic Director of Source Festival for nearly a decade.

ABOUT THE CREATORS (CONTINUED)



ROC LEE is a Helen Hayes Award winning DC based Composer/Sound Designer. He holds a Master of Music in Stage Music Composition from CUA. Roc creates music and sound design for video games, theater, film and podcasts. <https://rocleen.net> Credits include: *May 22, 2020, Voices of Now: Inside Voices, Snowchild, The Price, The Year of Magical Thinking, Mother Courage* at Arena Stage; *Crossing Mnissose* at Portland Centerstage; *Small Mouth Sounds, Doll House 2* at Roundhouse; *Kid Prince and Pablo, The Watsons Go to Birmingham 1963* at Kennedy Center TYA; *Fairview, Describe the Night* at Woolly Mammoth Theatre; *Admissions, Curve of Departure* at Studio Theatre; *The Lathe of Heaven* at Spooky Action Theater; *CHARM, Hooded: Or Being Black for Dummies, Ulysses On Bottles, Oh God!* at Mosaic Theater; *Aubergine, The Importance of Being Earnest* at Everyman Theatre; *Singin' In The Rain, Matilda The Musical!, Tiger Style!, The Invisible Hand, On The Town, Aubergine, Annie, Thurgood, Fickle Fancy Farce, Dial M for Murder* at Olney Theater Center; *AIDA* at Constellation Theatre; *In This Hope: A Pericles Project; Hello My Name Is...* at Welders; *[410]Gone* at Rorschach Theatre; *FAME!*; *In the Heights* at GALA Hispanic Theater.



TOSIN OLUFOLABI (she/her) is a sound designer, deviser & performer. After graduating from the University of Richmond, she interned/apprenticed at Berkshire Theatre Group, Barrington Stage Company and Olney Theatre Center. Her most notable sound designs include *In the Middle of the Fields* (Solas Nua); *Ghost/Writer* (Rep Stage); *Distance Frequencies* (Rorschach Theatre); *Hi, Are You Single?* (Woolly Mammoth Theatre Company); *Loveday Brooke* (We Happy Few); *Head Over Heels* (Monumental Theatre Co.); *School Girls; Or, The African Mean Girls Play* (Round House Theatre); *Gloria* (Woolly Mammoth Theatre Company); *Peepshow* (dog & pony dc); and *Lela & Co.* (Factory 449).



DOUG ROBINSON (he/him) Doug is currently earning his MFA in playwriting at the Yale School of Drama. His play *Ripple* was produced during the 2020 Klecksography Festival. He recently wrote the hit interactive play *Spy Academy!* He received commissions from Ally Theatre Company and he has also assistant directed at Woolly Mammoth Theatre Company, Theatre Alliance, and Constellation Theatre Company. Doug was recently awarded the inaugural Reimagine Theatre for Young Audiences grant for his play *Capture the Flag*.

ABOUT THE CREATORS (CONTINUED)



DEBRA KIM SIVIGNY (she/her) has been a company member at Rorschach since 2006. Recent credits include *Shrines*, a public art project with The Arcanists; costumes for *Curious Incident of the Dog in the Nighttime* (Round House Theatre), *Easy Women Smoking Loose Cigarettes* (Signature Theatre) and scenery for *Having Our Say* (Lyric Theatre of Oklahoma), and *Kill Move Paradise* (Rep Stage). She is the writer-creator of *Hello, My Name Is...* (The Welders), an immersive installation about Korean adoptees. She received the Helen Hayes Award for Outstanding Scenic Design for *Forgotten Kingdoms* at Rorschach Theatre and is a five-time nominee. She is on the faculty at George Mason University.



JONELLE WALKER is a Helen Hayes Award-nominated playwright, theatre-maker, and academic based in Houston, Texas. She is a Company Member and Associate Producer with Rorschach. Her previous work as a playwright includes *TAME*. (2016), *Illyria, or What You Will* (2018), *The Theatre of Self-Loathing Presents ...* (2015), and a variety of short play projects. Jonelle is also a doctoral candidate at the University of Maryland in Theatre and Performance Studies; her dissertation studies white femininity on stage, film, and social media screens from 1865 to the present. She is filled with gratitude for the whole DF team and every subscriber who has been on this wild journey.



ABOUT THE ARTISTIC AND PRODUCTION TEAM



MEL BIELER (Set and Props Design) (she/her) is an event scenic and experience designer, theatrical set designer, playwright, and craftswoman who gets pumped to create surprising and memorable experiences led by exploration and whimsy. She's transformed hotel garages into Healthcare Underground, brought tactile Japanese gardens to Artechouse, and felted her way through the North Pole. When she's not exploring the real (or imaginary) world around her with a journal or camera in hand, she's planning her next adventure to meet fortune tellers in Vietnam, mix cocktails in underground caves in Prague and feed baby tigers in Thailand. She's a founding company member and artistic collaborator of Pointless Theatre, and co-founder of Relay Experiences and the Leo Group.

KYLOS BRANNON (Video Designer) See CREATORS bios.

JENNY MCCONNELL FREDERICK (Director) See CREATORS bios.



MOYENDA KULEMEKA (Costumer Designer) Signature Theatre: *Detroit '67* (upcoming); 1st Stage: *The Brothers Size* (2020 Helen Hayes winner: Outstanding Production in a Play, Hayes); *Trying*; GALA Hispanic Theatre: *La tía Julia y el escribidor*; *Exquisita Agonia*; *Como agua para chocolate*; *En el tiempo de las mariposas*; *La foto*; Mosaic Theater: *Fabulation*; Adventure Theatre: *Tinker Bell*; NextStop Theatre: *East of Eden*; *Singin' in the Rain*; *Fallen Angels*; The Welders: *Switch*; The In Series: *From U Street to the Cotton Club*; We Happy Few: *Macbeth*; *The Dog in the Manger*; *Pericles*; Young Playwright's Theatre: *Three Cheers to Grace*; Caine Lyric Theatre: *A Raisin in the Sun*. www.moyendadesigns.com

DEVIN MAHONEY (Technical Director) is a freelance Technical Director, Designer and Artistic Consultant based in Washington, DC. Current projects include *Doña Rosita la Soltera* (GALA, TD), *@Issa_Garden* (Producer). Technical Direction for 2020 Helen Hayes Outstanding Production winner *FAME* (GALA). Thanks to the Rorschach team for keeping art alive and exploring new audience experiences throughout the past year!



JAMES MORRISON (Lighting Designer) is a D.C based Multi Media and Lighting Designer. In The greater D.C area James has designed for the Riverside Center For the Performing Arts, Mosaic Theatre, Ravel Dance Company, Greater Washington Dance, The Creative Cauldron, and NextStop Theatre. Outside the D.C area his credits include work with the Illinois Shakespeare Festival, Clinton Area Showboat, and Heartland Theatre. James holds an MFA in Lighting Design from Illinois State University. You can find more of his work at jamesmorrisondesigns.com

ARTISTIC AND PRODUCTION (Cont.)



GORDON NIMMO-SMITH (Sound Designer) is a proud Rorschach company member who designed the sound for Rorschach's recent productions of *The Toxic Avenger* and *Sing to Me Now*. He also video edited Rorschach's *Magic in Rough Spaces* and *Klecksography* during the COVID-19 pandemic. Other sound design work include Constellation Theatre Company: *The 39 Steps*, *Caucasion Chalk Circle* (Helen Hayes Nomination), *Aveunue Q*; Solas Nua: *In The Middle of the Fields*, *Little Thing*, *Big Thing*; Keegan Theatre: *Parade*, *Legally Blonde*, *Hands on a Hardbody*, *Chicago*; Spooky Action: *The Man Who*, *The River*. Thanks to Alex, Mairi, and Mac the dog.



ALLISON POMS-STRICKLAND (Stage Manager) Rorschach Theatre SM debut! She has worked in the DC area since 2016. Previously, she has worked as a Stage Manager for Keegan Theatre, 1st Stage, Hub Theatre, Arts on the Horizon, Capital Fringe; ASM for Synetic Theatre, Urban Arias, Adventure Theatre and Production Assistant for Ford's Theatre, Signature Theatre, Kennedy Center TYA



ABBY WASSERMAN (Assistant Stage Manager & Waiter) is thrilled to be working with Rorschach again! They are a Freelance Stage Manager in the DC Metro Area with a BA in Theatre from The University of Maryland College Park. They have worked with Rorschach Theatre, WSC Avant Bard, Monumental Theatre, Brave Spirits Theatre, Solas Nua, and 4615 Theatre. She would like to thank her partner Jez and her furbies for keeping her mostly sane during quarantine.

SHOP VEGAN SPECIALS Now - July 31st!

Time to *be well* mind, body, & skin...

Take control of your wellness this month and become a Preferred Client with a qualifying order.

Preferred Clients enjoy exploring & defining their wellness as they shop and receive 20-40% off every time.

Shop with,

Independent Consultant, District Manager
Tarawhitneyrison.arbonne.com



Tara Whitney
ARBONNE
INDEPENDENT CONSULTANT



Additional Staff and Artists (Chapters 1-7)

VOICE OF ERNIE (chapters 2, 6): Jonathan Palmer

VOICE OF XAVIER (Chapter 5): Reginald Richard

VOICE OF BEATRICE (Chapter 6): Lori Pitts

ADDITIONAL CONSTRUCTION AND CREATION OF ARTIFACTS:

Aiden Schaeffer, Sydney Moore

ADDITIONAL BOX PACKING HELP:

Tori Boutin, Lee Cromwell, Matt Frederick, Thane Frederick, Michael Kyrioglou, Sean Flaherty, Aiden Schaeffer

"BETA TESTERS" FOR CHAPTERS:

Sara Barker, Sean Flaherty, Lee Liebeskind, Cam Magee, Gordon Nimmo-Smith, Megan Reichelt, Christian Sullivan, Peggy Sullivan, Catherine Tripp

Rorschach Theatre Staff

Founding Artistic Directors: Jenny McConnell Frederick and Randy Baker

Associate Producer and Press Contact: Jonelle Walker

Board of Directors: David Ghatan (Board Chairman), Claire Carlin, John Ralls, Jim Rosenberg, Eileen Vitelli, Gerald Yuille, Randy Baker, Jenny McConnell Frederick

Resident Company Members: Linda Bard, Sara Barker, Tori Boutin, Frank Britton, Robin Covington, Natalie Cutcher, Louis E. Davis, Casey Kaleba, Veronica J. Lancaster, Lee Liebeskind, Cam Magee, Scott McCormick, Katie McCreary, Linz Moore, Gordon Nimmo-Smith, Robert Pike, Megan Reichelt, Debra Kim Sivigny, Christian Sullivan, Sarah Taurchini, Sara Dabney Tisdale, Catherine Tripp, Yasmin Tuazon, Jonelle Walker, Grady Weatherford

DISTANCE FREQUENCIES SPECIAL THANKS:

Artistic Concepts Group, Rachel Davis, Flying V, Gala Hispanic Theatre, The Parks at Walter Reed, Tom Pipkin, Jon Rubin, The Shakespeare Theatre, The Shoreham Hotel, Silver Spring Black Box, Bethany Vanderhoff.



PSYCHOGEOGRAPHIES

LAUNCHING OCT 2021

Did you enjoy DISTANCE FREQUENCIES?

we will be back this fall with a new

***Psychogeographies* project**

Rorschach's season-long immersive adventures

Psychogeographies takes participants to lesser-known spots around their city as a fictional narrative unfolds over layers of history and magic realism. Launching in October, guests receive a box in the mail monthly that includes a new Chapter in the story, each box containing hand-crafted objects - letters, drawings, souvenirs, photos, or even snacks - and a map to a location in their city. The season ends with a live in-person event that culminates the story.

In the 2021-22 Season, subscribers will visit seven new locations throughout the DC Metro area as a new story unfolds throughout the year. What *is* that story you ask? We won't reveal that until the fall!

But if you're brave and hungry for adventure, join now for the lowest subscription price all season. Use the code word "Trailblazer" to get a subscription to all 7 boxes and a ticket for the final event for just \$125.

[PURCHASE YOUR SUBSCRIPTION BY CLICKING HERE](#)

KEEP THE MAGIC ALIVE

Disney+ is amazing, you guys. And Netflix. Seriously. It's right there in the tv already. No shoes—or even pants—required.

Rorschach Theatre knows how stiff the competition is when it comes to your entertainment options. But as you know – having spent 20 years with our unique brand of theatre – what we do is different. It's our intention to keep engaging you in a way that Hulu never can, bringing you spine-tingling, heartwarming, brain-teasing events that immerse you and engage you.

Please consider making a tax-deductible contribution to Rorschach Theatre today. We can't do it without you.

[MAKE A DONATION BY CLICKING HERE](#)